



color alert

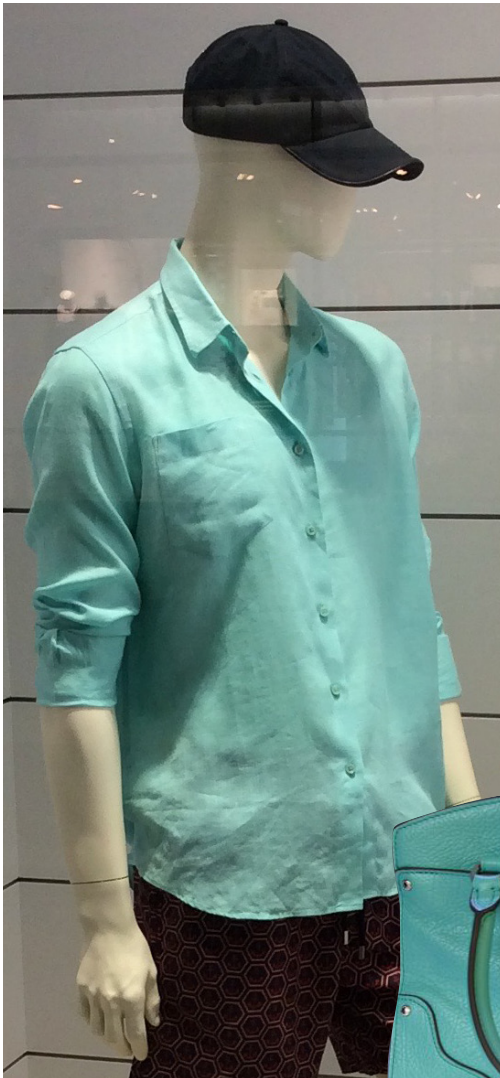
EDO EAU

Color continues to refresh and invigorate the world of design and living with **Edo Eau**, the CMG 2017 Asia Pacific key color.

From a small stream, to a wide ocean, to the most intimate of spa experiences, water is the source for cleansing, refreshing, and sustaining life. This bold, water-based aqua is robust with energy and adds a buoyant color addition to wardrobe and home.

It adds “color pop” to whatever it graces, making handbags and accessories come alive, and creating a kitchen focal point that entices the eye. In home decor, it can grace a statement piece of furniture, or accent a surface. From pebbled leather, to enamel finishes, to subtle textiles, Edo Eau will add a bright color, and remind you of its watery origins.

Take a moment to refresh yourself with Edo Eau.



VILEBREQUIN



COACH

Refreshing SUSTAINING Buoyant



FIESTAWARE



TABLE SEEN AT MDW16



ROLLER SHADE PATTERN BY MARIGOLD DESIGN